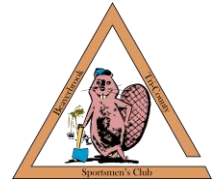


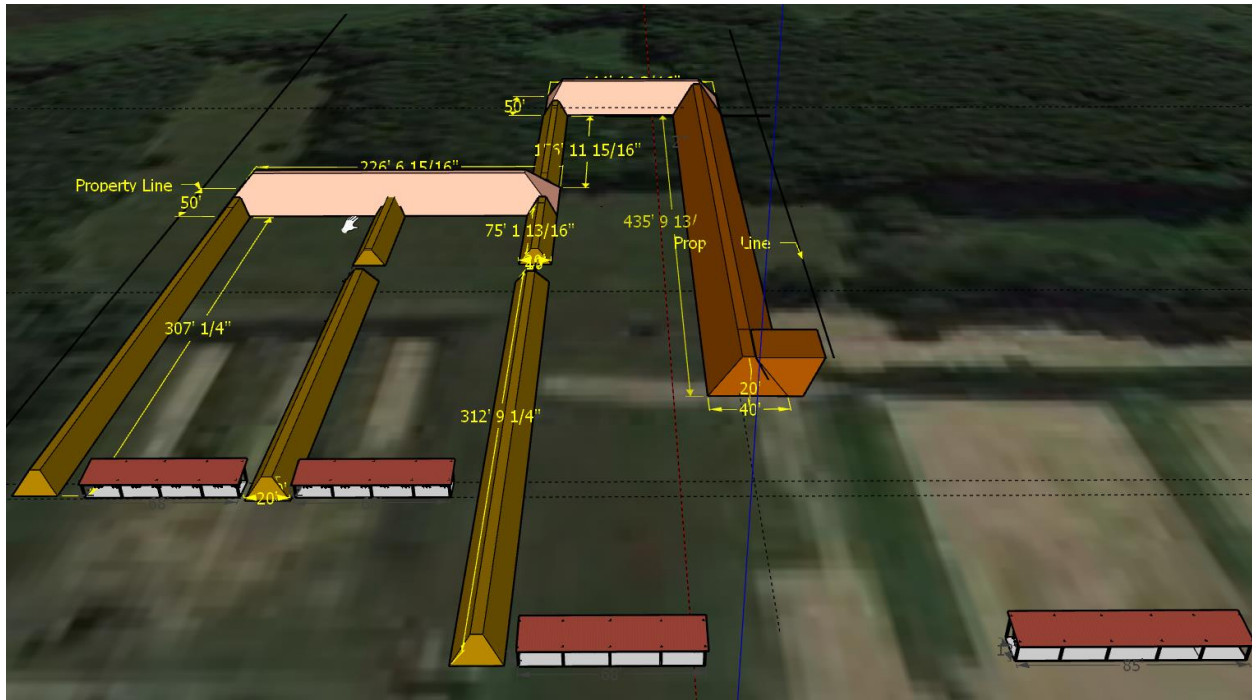


# Beaverbrook Tri-County Sportsmen's Club Newsletter

20500 Palisade St NE, East Bethel, MN 55011 (763)434-4514



## Looking Good at Beaverbrook!!



What a great year this has been. I have trouble totaling up all the gains and wins we have had as a club this year. Not the least of which was the successful Presidential and Congressional elections. For the first time in eight years the shooting community can breathe a sigh of relief that there will be no more political agendas taking aim at our 2<sup>nd</sup> amendment rights. With that being said, what do you think of our plan for the rifle range expansion? The sketch up above gives you an idea of what we have planned for a new 24 lane 100 and 200 yard rifle range over the east property north of the new pistol bays. I have to be honest with you. This expansion has gone through a year of discussion and constant revision in order to accommodate city, county and club

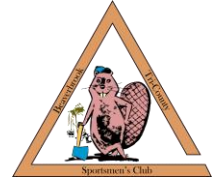


requirements. If all goes well, you may see some dirt moving once again next spring. You will also notice that we plan to add a covered shooting platform in Pistol Bay W-1 and level the parking lot west of the new pistol bays.



# Beaverbrook Tri-County Sportsmen's Club Newsletter

20500 Palisade St NE, East Bethel, MN 55011 (763)434-4514



How about the new paint job on the benches and trap houses? I don't think I have ever seen the club looking this good. So, if you are on the fence about renewing your membership next year, this ought to help you make your decision.

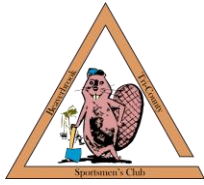
**New Gate:** I am sure you have noticed the new electric gate at the range. Well it is going operational soon and you won't have to get out of your car to gain access and leave the range. If you see the new gate closed just hit the # key and enter in this year's combination for the gate. This will work until 1 February 2017 at which time you will have to use your new proximity membership card to gain access and leave the range. Remember, you have to renew your membership before 1 February 2017 to receive your new membership card. There is no cost for the initial card but you will have to pay for any replacements needed.

**Range Fees:** You may have heard, but we no longer require members to pay a \$1 fee each time they use the rifle/pistol ranges. You still have to pay \$5 per guest and you are still limited to 2 guests at a time, but your spouse and any children/grandchildren under the age of 18 are considered non-voting members and do not require a guest fee as long as they are accompanied by the adult club member. We also dropped the cost for a round of trap down to \$3 for members. You won't find it cheaper anywhere.

**New Member Orientation:** If you have a friend who is interested in becoming a member of Beaverbrook, we have a new process for bring on new members. They still need to complete the online application, but there is a new member orientation that they must attend. It is currently being held on the 2<sup>nd</sup> Sunday of each month. The new member application will be available in December and we will start having new member orientation in January 2017.

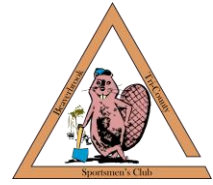
**WIFI Access at the Club:** That is right, we now have internet access at the club. It ain't the fastest you will ever see but it is good enough to check your email and browse the web. The passcode for the Guest is "Beaverbrook", not too hard to remember.

Your Executive Committee has been hard at work to make improvements at the club and improve the service to our members. Stay tuned to other things like using credit cards to pay for Trap shooting, membership dues, etc. and maybe even trap gun rental next year.



# Beaverbrook Tri-County Sportsmen's Club Newsletter

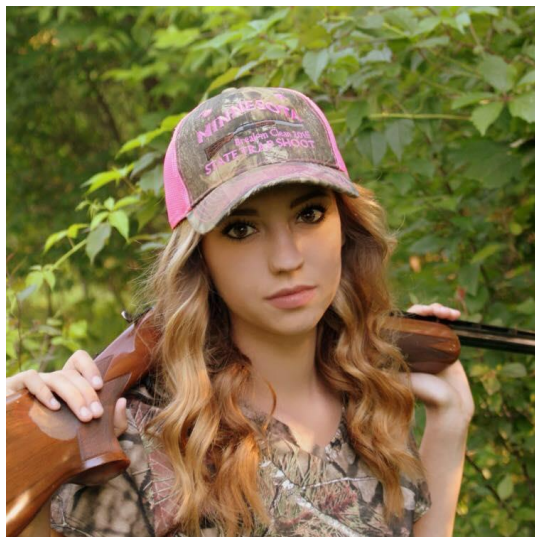
20500 Palisade St NE, East Bethel, MN 55011 (763)434-4514



## Trap Shooting

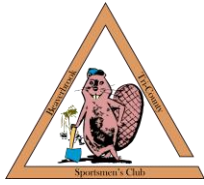
So how was your Trap Shooting season? Personally, I had my best year yet. Our Tuesday and Wednesday Trap League saw increases in team numbers and great weather to shoot in this year.

I know many of you know Kyler Berens. I wrote about him in last year's Fall Newsletter. This year was no different for Kyler. He continues to stack up the wins and he made the 1<sup>st</sup> team, 4<sup>th</sup> position in the ATA National Sub Juniors. He won the doubles championship over all with a 99 and 40 strait in the shoot off, won champion junior singles with a 199 and 25 in the shoot off, high over all junior and a few preliminary events for a total of 205 all American points to start off his junior years. That is amazing that one of our own is nationally recognized. He even made the cover of Trap & Field.



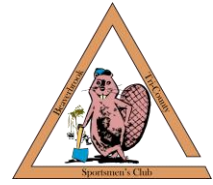
The Berens pride does not end there. Miss Sara has been racking up the wins as well this year with a 1<sup>st</sup> in Class at the Iowa City Trapshoot.





# Beaverbrook Tri-County Sportsmen's Club Newsletter

20500 Palisade St NE, East Bethel, MN 55011 (763)434-4514



I am sorry for not posting the league results in the newsletter this year. If I can get the full results from the League Secretaries, I will publish another newsletter. Here are some pics from the banquets.

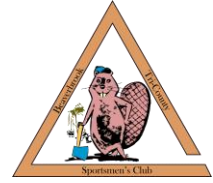


If you are hard core about Trap shooting, we will resume Sunday Trap Shooting in December. Be sure to check the calendar before heading out.



# Beaverbrook Tri-County Sportsmen's Club Newsletter

20500 Palisade St NE, East Bethel, MN 55011 (763)434-4514



## Pistol Shooting

This year's Pistol League was a great success. Below are some photos and feedback for your enjoyment.

### Ladies League

*This was my first year of shooting, and it was very fun. I learned a lot! And everyone was very friendly and professional. Questions were always answered to my satisfaction. I will be back for another season.*

*Signed: R.S.*

*This was the first year all of us women had shot a gun. We all grew through the year with our confidence in shooting and handling our guns. Wayne and the other men who volunteered to help us were very nice and helpful. By the end of the year we all grew in our skills and confidence. Thank you to Wayne and the men's league for their help and acceptance.*

*Signed: R.R.*

*Wayne is awesome. He helped us ladies feel comfortable shooting in the 22 league. He would answer all our questions and help us learn how to keep score. I had a blast on my 1st league. I plan on doing many more.*

*Signed: S.B.*

*This first time experience was amazing!!! I cannot wait to come back next season. Wayne made the season so much fun for us, knowing how all of us women act he just laughed along with us.*

*The only thing I would change is that I did not like how some women had lazer dots and others didn't (me), It should be everyone is the same. Thank you for the fun experience.*

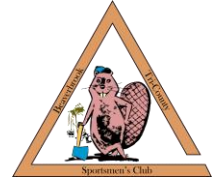
*Signed: M.W.*





# Beaverbrook Tri-County Sportsmen's Club Newsletter

20500 Palisade St NE, East Bethel, MN 55011 (763)434-4514



*We have to give a big shout out to Wayne for helping the ladies 22 pistol league. This first year was a blast. Unsigned:*

22 League Mixed League

*New Shooter*

*I had a lot of fun shooting on Tuesdays, I will be back next year. Signed: R.N.*

*Thank you so much for the help with my first shooting league. I had a great time. Everyone was so friendly and helpful. They helped this rookie get his feet wet - and make it fun. I can't wait for next year, hope you do it again! Signed J.C.*

*Old Hands*

*This is a fun league to shoot. And Wayne is a great guy to shoot with. Signed: G.M.*

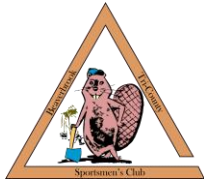
*Love the pistol league, very well run and a great chance to have fun and/or have some good friendly competition. Thanks to all members of the league. Unsigned:*

*I would like to thank the club for providing the opportunity to participate in the annual summer pistol league. Some of my family members (wife, daughter-in-law, son) and I have attended over the last several years, and have enjoyed sharing in the challenge of pistol target shooting, and the friendly atmosphere created by everyone involved. We look forward to this event every summer. Signed: J.D.*

*Guests or Spouse's*

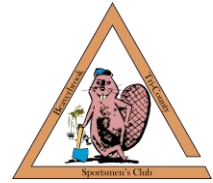
*Thanks for this wonderful place! My husband comes here as often as he can... And I enjoy the time alone .. ha ha. Just kidding - - - I'm glad there is a place like this for people who like to shoot and mingle. Thanks!!! Signed: (Wife of) T. F.*





# Beaverbrook Tri-County Sportsmen's Club Newsletter

20500 Palisade St NE, East Bethel, MN 55011 (763)434-4514



*As a female guest of a member - - the people here have been super welcoming and fun! I just might join this club. Unsigned:*

**Firearms Safety Training:** There were over 300 students this past year at Beaverbrook that took the Firearms Safety (FAS) classes through the three or four different groups that teach it, the instructors are all volunteers that do not get paid to teach the classes and most of the time use their own equipment. They teach correct and safe gun handling, target accusation, and how to safely conduct a hunt with multiple hunters. How to use hunting equipment and how to survive a night or two in the woods if they get lost.



The rifles used for the range shooting are bought by the groups teaching the classes and are all .22LR caliber bolt action, there usually are a few instructors who bring their personal guns out to the range day to show the student how to work the different actions while in a safe environment.

## The Search for Accuracy

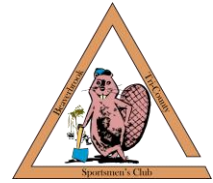
This summer, I had some fun with a new gun that I bought to hunt hogs down in Texas this winter. I learned that you can drop them hogs with a 5.56mm but if you are trying to punch through their chest plate, you may have a problem. So, I opted for a 7.62mm/.308 Sig Sauer 716-DMR. Those that know me, know I am partial to the Sig Sauer brand of pistols. Being a loyal fan, I thought I would give their rifles a try. This is a piston driven semi-auto with adjustable gas block and 18" Stainless Steel Barrel. For the optics, I went with the Sig Tango 4, 3-12x-40mm. This is a first focal plane scope and I found the glass to be very clear and obvious quality.





# Beaverbrook Tri-County Sportsmen's Club Newsletter

20500 Palisade St NE, East Bethel, MN 55011 (763)434-4514



My first range day with the gun was kind of disappointing. I tried several different



loads to see what the gun liked to eat. My best group was with 168gr BTHP Federal Match Premium. The 168gr A-Max w/ 44gr of Varget came in at a close second. I also tried some 149gr FMJ, Federal XM80C



and 155gr FMJ Magtech that produced 3"-5" groups at 100 yards which is this side of pitiful.

I wasn't satisfied with even the best groups, so back to the reloading bench I went. Sticking with the 168gr A-MAX bullet and Varget powder, I did a step load from 40gr to 44gr of powder. Each load was hand measured and seated to 2.800" OAL. I have to tell you the results were surprising. I was worried that the gun would never be a tack driver, but with the right load it can get pretty close. As you can see from the photo there was a big difference in groups from one load to the other. The winner is 42gr of Varget. Texas here we come.



## Club Officers:

President- Doug Welter  
Vice-President- Wayne Jacobson  
Secretary- Dave Roehler  
Treasurer- Jeff Krage

## Board Members:

Krieg Ofstad	Bill Dubats
Brian LaDoux	Wayne "Bronco" Johnson
Kyle Berens	Orland "Oze" Osen
Troy Slater	Don Severson Jr.
Brent Pack	Jason Montayne

If you have any questions or concerns, please contact a board member or e-mail us at [bod@beaverbrook.us](mailto:bod@beaverbrook.us) or [info@beaverbrook.us](mailto:info@beaverbrook.us)